



Industrial Park Shumen

Industrial Park Shumen AD

- A joint Stock Company established with the participation of Shumen Municipality.
- Constructs and manages the new industrial area of Shumen.
- Provides funds for the project.
- Transforms 240 hectares of agricultural land into an industrial park.
- Creates the new industrial image of Northeast Bulgaria.
- Launched the project in 2011.



Aims and Objectives

- Developing the economy in the region and improving the standard of living;
- Enhancing the investment climate in the Municipality of Shumen;
- Creating a modern and multifunctional business area, in step with the developing industries;
- Establishing a quality environment for new companies;
- Answering the clients' needs by creating a ready-to-use product.

The investment project represents a concept of development for the city of Shumen

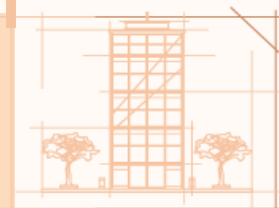
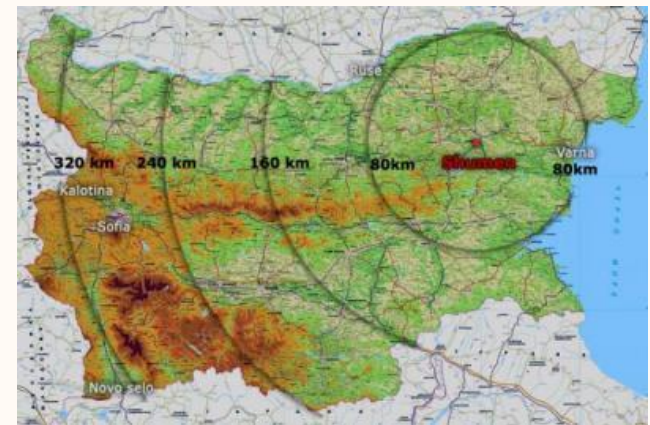
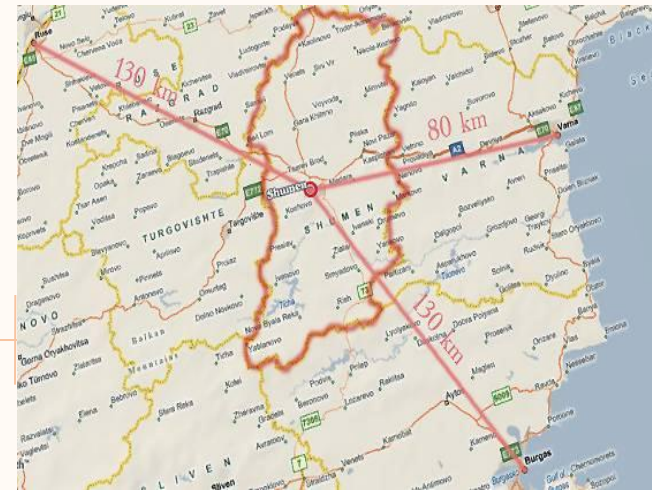




Location 1

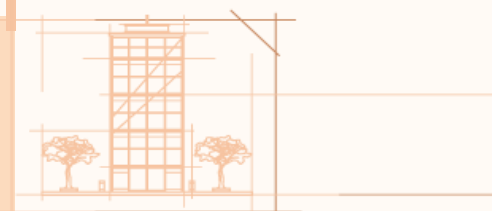
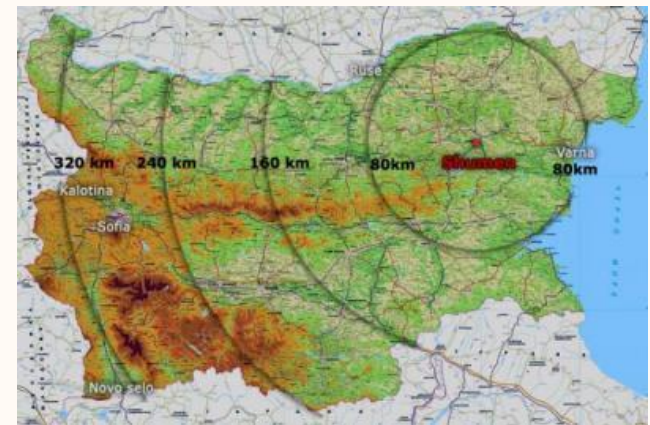
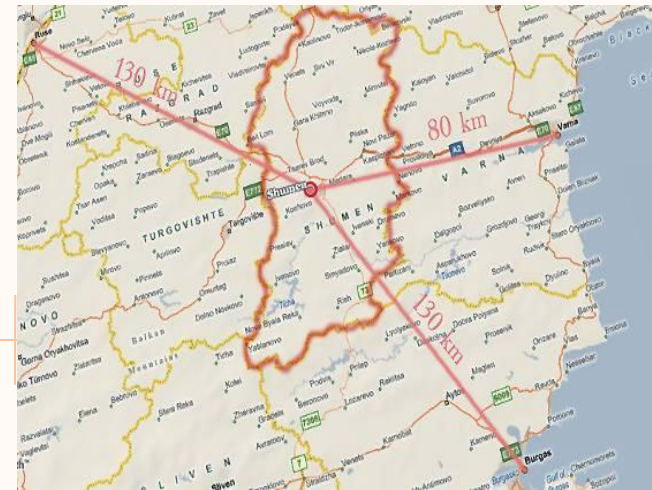
Region

- The municipality of Shumen is located in the central parts of Northeast Bulgaria;
- Population – 200 000 inhabitants;
- The region of Shumen is one of the main economic and business centres of Northeast Bulgaria;
- 7 municipality capitals are located at a distance of less than 100 km.



Logistics

- Unique geographic position;
- Well-developed infrastructure and the transport connections;
- Immediate proximity to the “Hemus” highway;
- Close to international port and airport;
- Almost all main roads in the country are passing through the city, as well as the main corridor connecting Europe to Asia;
- Suitable for all kinds of commercial and logistic activities.



INDUSTRIAL PARK SHUMEN



Development plan





Total area: 450 000 sq.m.;

Division: 52 plots;

Building density: 80%

Stage: Completed

Zone A



-Sub-zone A of Industrial Park Shumen is conveniently connected to the republican road network through roundabout;

-The internal street arrangement provides access to each plot;

-The high quality asphalt works guarantee the long exploitation period of the internal road network;

- The sewage and drainage system provides smooth functioning of the road network at any weather conditions;



Road network





-All industrial plots of Sub-zone A are supplied from a major conduit of \varnothing 400 mm;

-All pieces of land have access to the internal sewage network through pipes of \varnothing 315 mm;

-The sewage system operates through two sewage water-pumping stations and is connected to the city wastewater treatment plant;

- Modern fire protection system is in place with fire hydrants available every 50 m.

Water and Sewage





GAS SUPPLY

- Gas distribution station of Bulgartransgas EAD (JSC.) is located on the territory of Industrial Park Shumen;

- All industrial plots are supplied from a major gas conduit of \varnothing 200 mm and have access to the internal gas distribution network with pipes of \varnothing 63 mm and pressure of 5 bars.

OPTICAL FIBER NETWORK

- Industrial Park Shumen is equipped with an optical fiber network operated by the country's leading suppliers;

- Infrastructure corridors are also equipped with empty underground pipe network allowing additional cables to be installed if needed for connection to alternative suppliers.



Gas and Optics





-110 kV electrical power lines traverse the territory of Industrial Park Shumen providing unlimited possibilities for power supply;

-The electrical supply system in the industrial area is operated through one main power station and three substations.

- Every land plot is equipped with switchboards at initial capacity of 50 – 100 kW and prepaid access fees.

Gas and Optics





Industrial Park Shumen

- Provides safer investment opportunities;
- Offers a complete product and wide range of services;
- Presents distinctive long term aims and objectives;
- Grants competitive advantages;



SHUMEN INDUSTRIAL PARK

www.industrialshumen.com

27, Ljuben Karavelov Str.
9700 Shumen, Bulgaria
tel.: +359 84 877 427
fax: +359 84 877 429
office@industrialshumen.com

Thank you for your attention!